

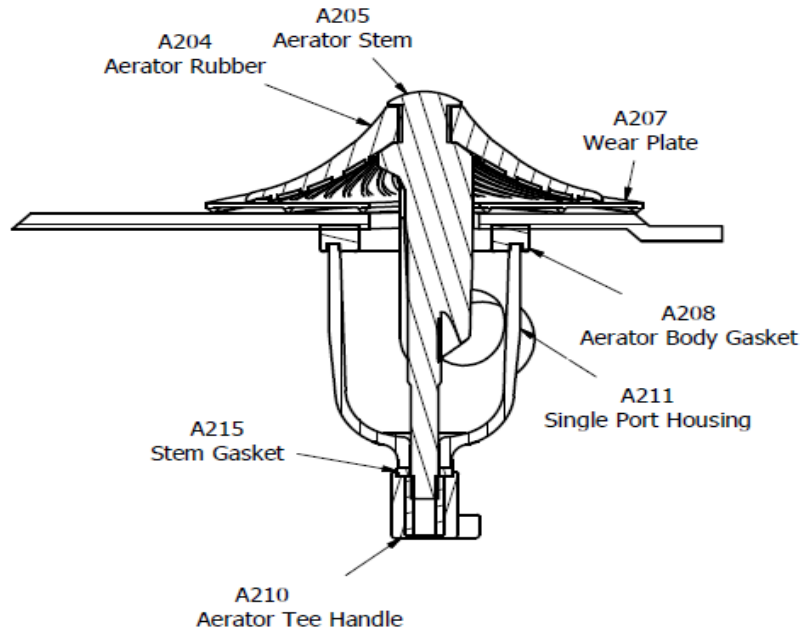


400 PARKWAY DRIVE
PARK HILLS, MO 63601
www.bulktankinc.com

BULK TANK, INC.



573-518-0600
1-800-841-5524
FAX: 573-518-0551



BULK TANK AERATOR INSTALLATION INSTRUCTIONS

NEW TRAILERS

1. Inside: Insert the Stem (A205) into the Wear Plate (A207) through the hole in center with the rubber coated side facing the inside hopper wall. Orient the "UP" up. Put the assembly in place.
2. Outside: Place the A208 Body Gasket over the open end of the Manifold Housing, with the flat side out, locating ring inside Manifold. Place Manifold over protruding A205 Stem. Insert A215 Stem Gasket over Stem, and then engage the A210 Tee Handle on the Stem threads. Turn the Tee Handle until Body Gasket makes full contact with the hopper. Give the Tee Handle at least two additional 360 degree full rotation turns or tighten to 50 in/lbs. **DO NOT OVER TIGHTEN.**

RETRO FITTING

1. Check if any product remains in hoppers. If so, open product valves so product can be pushed down into the line.
2. Remove only one Manifold at a time.
3. When going inside the tank, bring all new Aerators, Wear Plates, a putty knife, a wire brush and a rag.
4. Remove existing aeration devices including any gaskets from inside tank.



400 PARKWAY DRIVE
PARK HILLS, MO 63601
www.bulktankinc.com

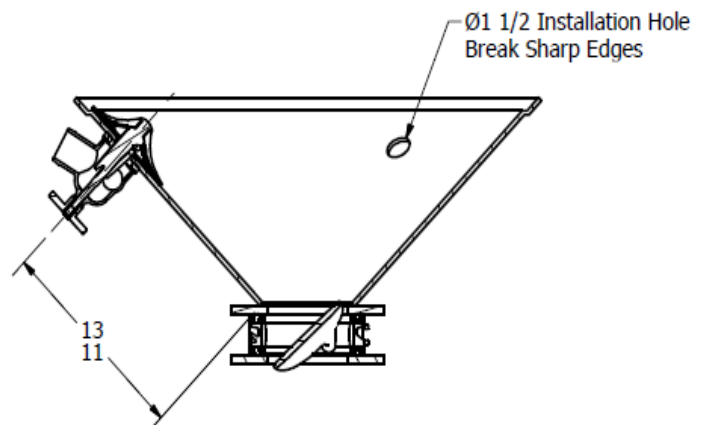
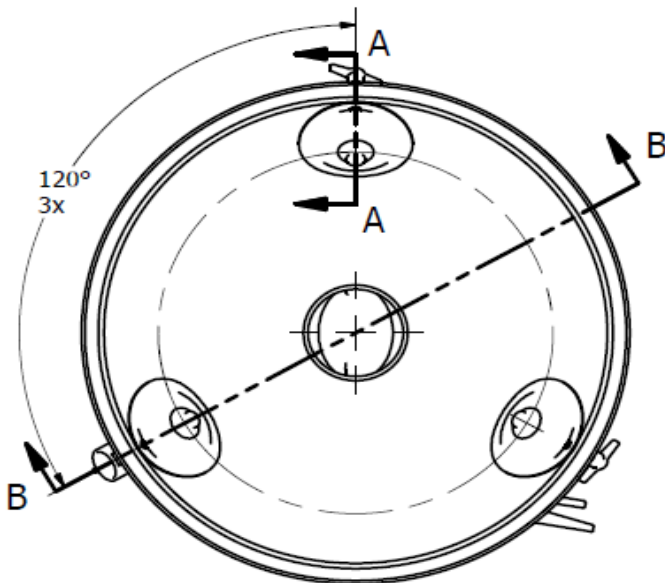
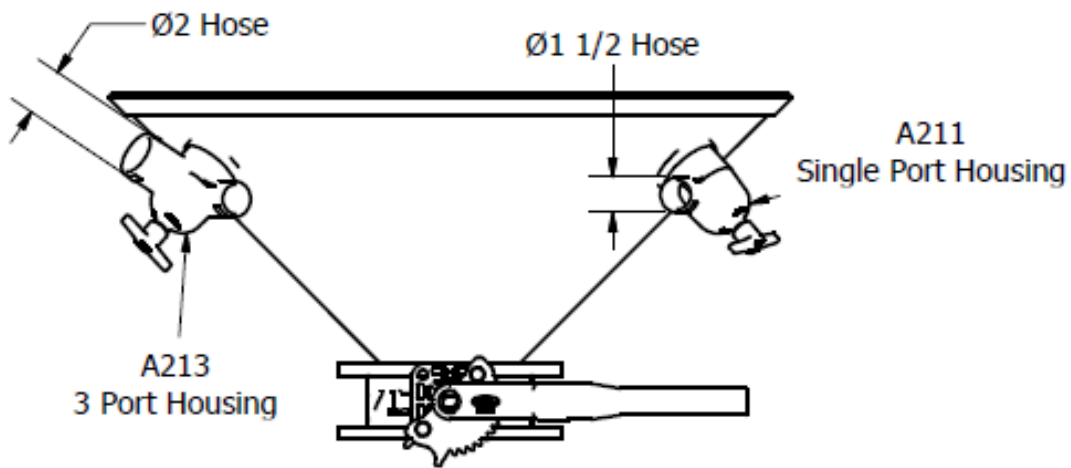
BULK TANK, INC.



573-518-0600
1-800-841-5524
FAX: 573-518-0551

5. To assure best seal against the hopper, clean the hopper surface thoroughly. Remove any loose and caked on material by scraping, wire brushing and wiping. Avoid any chipping action since it may dent the hopper surface and impede gravity flow.

6. Repeat steps (1) and (2) for new trailers. If Aerator wants to turn inside hopper, apply pressure to the top of the stem to hold it in place.



SECTION B-B